

# Brochure 2026



projective

Consult ▶ Engineer ▶ Deliver ▶ Support

[projectiveengineering.com](http://projectiveengineering.com)

# Projective: Your Global Partner for Facilities and Utilities Excellence

## Who we are

Projective is a global engineering partner supporting manufacturing clients in regulated industries with their utilities and facilities.

Established in 1998, we are trusted partners to some of the world's most recognised blue-chip brands. Our superpower is providing engineering assurance that turns corporate strategy into operational reality across your sites.

When performance drops, delivery becomes uncertain, or compliance risk increases, clients turn to Projective. We uncover what's really happening beneath the surface and set out clear, practical steps to address it.

We're a multi-disciplinary team of subject-matter experts and project engineers operating in strategic locations across the globe.

We combine holistic oversight of your facilities & utilities with deep, site-specific understanding.

This includes working on-site alongside your teams and suppliers to ensure projects land safely, perform as intended, to support and optimise day-to-day operations.



# Understanding Your Challenges

## Utilities are Invisible...Until They Fail

In high-stakes manufacturing environments, utilities are the backbone of production, yet they are often overlooked until performance falters or failure occurs.

We understand that today's leaders face a "perfect storm" of rising costs, ageing assets, and mounting regulatory pressures to increase sustainability, achieve Net Zero and stay compliant.

Complexity creates confusion, and confusion can lead to costly mistakes - whether that is an unplanned outage in a sterile pharmaceutical facility or a paper mill losing thermal efficiency. Projective removes this risk.

Our engineering insights help you build a stronger, more resilient business by ensuring your utilities are understandable, manageable, and designed to perform technically, commercially and sustainably, long term.



## The Clients We Serve

We specialise in high integrity, regulated industries where reliability, compliance and sustainability are non-negotiable:



### Pharmaceutical & Consumer Healthcare

Delivering compliant, sterile, and high-performance contained process environments for operational resilience that supports product quality and patient safety.



### Food & Beverage

Designing hygienic, high-throughput utility systems - from steam and refrigeration to effluent & water management - tailored for high-risk environments.



### Fast-Moving Consumer Goods (FMCG)

Delivering agile, scalable engineering that supports speed-to-market, cost efficiency and long-term asset performance in dynamic production environments.

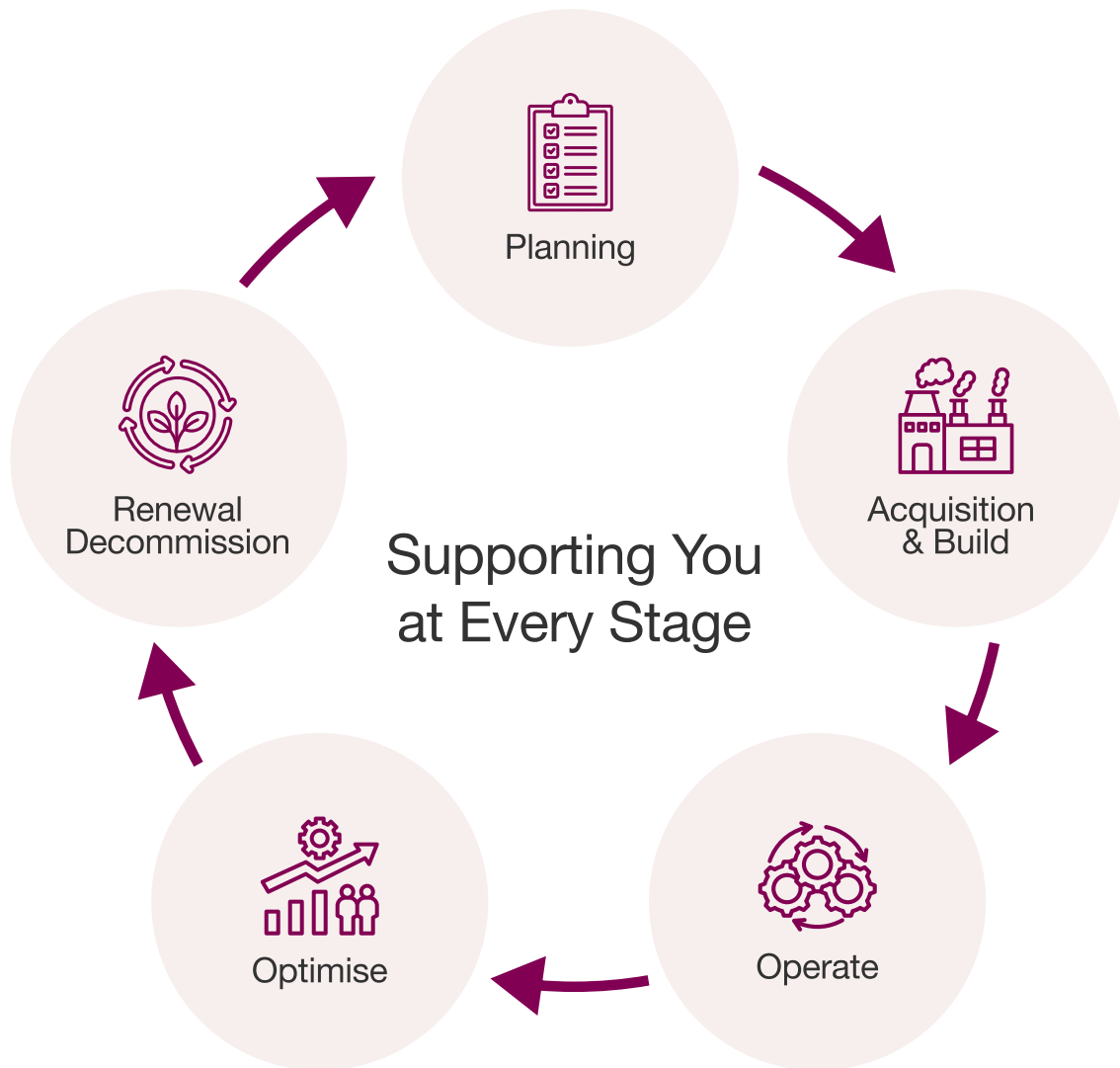
# How we help you build a better business

## Confidence Across the Asset Lifecycle

Utilities decisions shape cost, risk, compliance, and performance for decades.

Projective supports clients across the full asset lifecycle, helping you make confident decisions at every stage, whether planning future capacity, stabilising live operations, or preparing assets for the next generation.

Wherever you are in the lifecycle, our role is the same: to give teams clear insight and reliable control over outcomes.



## Why This Matters

By working across the full asset lifecycle: Projective helps clients move from reactive problem-solving to predictable, controlled performance. This leads to better decisions, stronger operations, and lasting confidence in performance.



## Strategic Planning

Engineering clarity before decisions are locked in.

We assess what assets you have, how they're performing, and where the real risks and constraints sit across your utilities.

From whole-site master planning to single-asset feasibility, we test options before they become projects. Reviewing capacity, compliance, carbon reduction routes, and future demand based on how your sites actually operate.

**You get:** Clear direction, cost assurance and delivery plans that align with your production needs.



## Acquisition & Build

Design high-performance facilities from day one.

We ensure new or upgraded utilities are designed, built, and commissioned properly so they perform as intended from the outset. Acting as client engineer, we support procurement and delivery, challenge assumptions, and manage subcontractors to avoid over-engineering, design gaps, and costly future retrofits.

**You get:** Assets designed correctly from the start and commissioned smoothly, perform as expected, and avoid unnecessary cost or carbon later.



## Operational Excellence

Keeping live operations stable, compliant, and predictable.

Once assets are operational, the priority is keeping production running safely and reliably. We focus on regulatory compliance, business continuity, training, and maintenance planning so utilities support day-to-day operations.

We identify risks early, put the right plans and documentation in place, and support your team to reduce unplanned downtime and operational risk.

**You get:** Stronger compliance, better OEE and fewer surprises with less 3am 'loss of production' calls.



## Performance Optimisation

Maximise value from your current assets.

Over time, production changes and assets drift from their original design. We analyse how utilities are really operating, identify the root causes of waste or failure, and implement targeted improvements, from retro-commissioning, focused retrofit to energy, water and carbon reduction.

We prepare assets and data for AI-led optimisation by ensuring metering, controls, and performance data are fit for purpose.

**You get:** Lower operating costs, higher productivity, reduced energy, water and carbon use. Improved reliability for longer asset life.



## Re-Life, Renew, Remove

Planning the next generation without risking today.

When assets reach end-of-life, the decision isn't just a like-for-like replacement. We reassess demand, performance, and site-wide impact, often avoiding unnecessary capital spend improving efficiency elsewhere. We help you evaluate re-life, renewal, replacement, or decommissioning options in the context of production, risk, and business continuity.

**You get:** Lower risk, robust capital estimates, orderly transitions and production continuity through change.

# Our Services in Sustainability

## Maximise Your Highest Impact Resources

### Energy & Water Specialists

Energy and water sit at the heart of industrial sustainability, where the greatest gains are made.

For most manufacturing sites, these demands are buried within utilities and process systems, making them difficult to see, quantify or control.

At Projective, we make them visible, measurable and actionable.

Using energy and mass balances, digital twins and detailed process analysis, we identify exactly where energy and water are lost, misused or over-consumed and what to do about it.

From there, we design and deliver solutions that improve performance, reduce cost and move you towards Net Zero with confidence.

## Our Specialist Expertise



### Energy

Optimising how energy is generated, distributed and used, ensuring nothing is lost unintentionally between raw utilities and production output.



### Water

Delivering water stewardship through efficient use, recycling and reuse, and reducing impact from the use of this valuable global resource, through correct system design and operation

## Preventative Care by Design

Inefficiencies in utilities and facilities systems are where operational budgets quietly erode.

With decades of industrial engineering experience, we diagnose the root causes of recurring issues, not just the symptoms and design them out of your system.

When performance drops, or costs rise without a clear cause, we bring clarity, control and long-term stability back to your operation.



# Environmental Performance

## Reduce energy, water and carbon - without compromising production.

We help you take control of how your utilities perform in operation.

It starts with accurate measurement and metering, establishing where energy and water are being lost or overused. From there, we implement practical reduction strategies including demand management, process optimisation, wastewater treatment and reuse.

We also support on-site training and engagement, ensuring improvements are adopted and sustained.

The result: lower operating costs, improved efficiency and measurable environmental performance, delivered without interruption in a live manufacturing environment.

# Net Zero Carbon

## Move from targets to engineered, site-level delivery.

We turn Net Zero ambition into action.

Whether you need a corporate roadmap or a detailed site-level plan, we assess what's technically viable, financially realistic and operationally sound.

We support compliance and reporting, evaluate technologies, and provide independent due diligence on third-party solutions and funding options.

This is not a theoretical strategy; it's a clear, engineered path forward built around your site, your constraints and your production demands.



# Renewable Heat & Power

## Integrate low-carbon energy without risking reliability.

From solar and wind to heat pumps, alternative fuels and high-temperature industrial heating, we focus on solutions that integrate effectively into your operation, not bolt-on projects.

Every solution is engineered to maintain performance, compliance and continuity of supply, while reducing carbon and future-proofing your site.

# The Process Energy Model

To improve performance, you first need to understand how energy flows through your site.

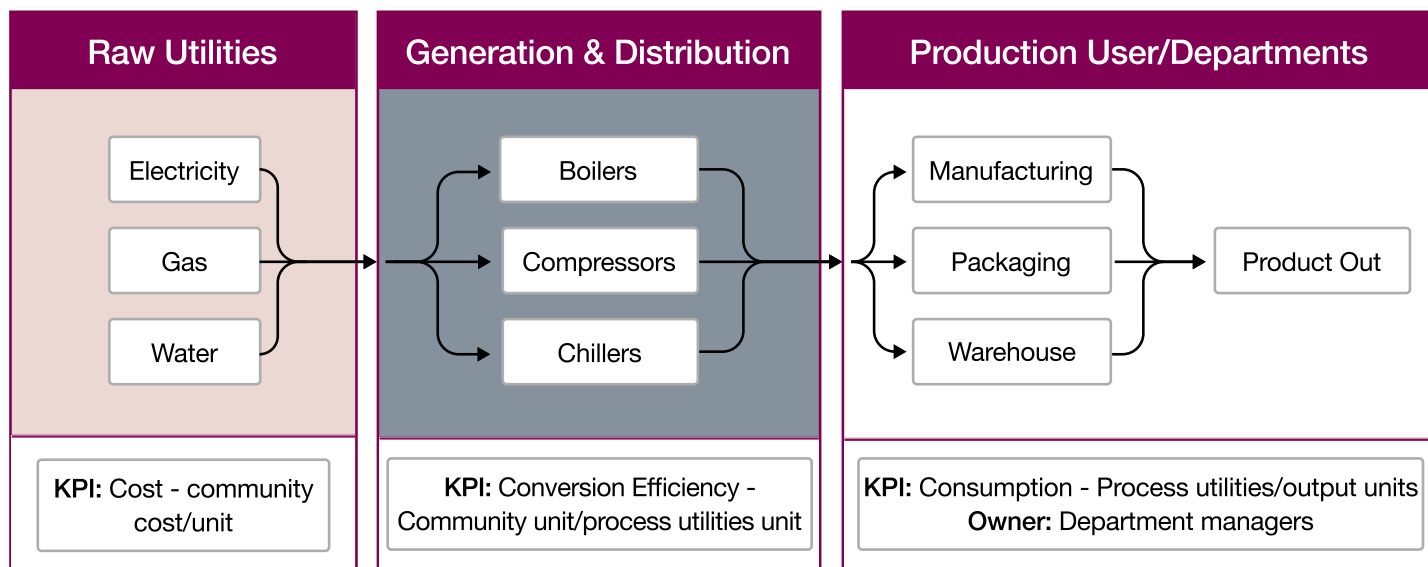
Projective's Process Energy Model maps that flow, from raw utilities through generation and distribution, to final use in your manufacturing processes.

This allows us to identify exactly where energy is lost, quantify the impact, and target interventions where they will deliver the greatest return.

We don't guess. We engineer.

Decades of scientific and technical analysis underpin our approach.

Our Process Energy Map, developed in 2006, was a precursor to the ISO 50001 international energy management standard still in use today.



## Energy & Process Modelling for Confident Decisions

We build robust energy and process models of your operations, combining first-principles engineering with advanced tools such as digital twins and AI-based analytics where they add real value.

By comparing how your systems should perform with how they perform today, we identify gaps, quantify cost and carbon impact, and provide clear, evidence-based options.

We work alongside your team to evaluate trade-offs, implement solutions and transfer knowledge, leaving you with both a better-performing plant and a clear understanding of why it works.



## Don't leave your energy efficiency to chance.

While many consultancies can help you to identify an industrial sustainability problem. Few stay to solve it. We own the outcome. That's the Projective promise.



Capital Preserved –  
Avoiding €2M in  
Unnecessary  
Expenditure



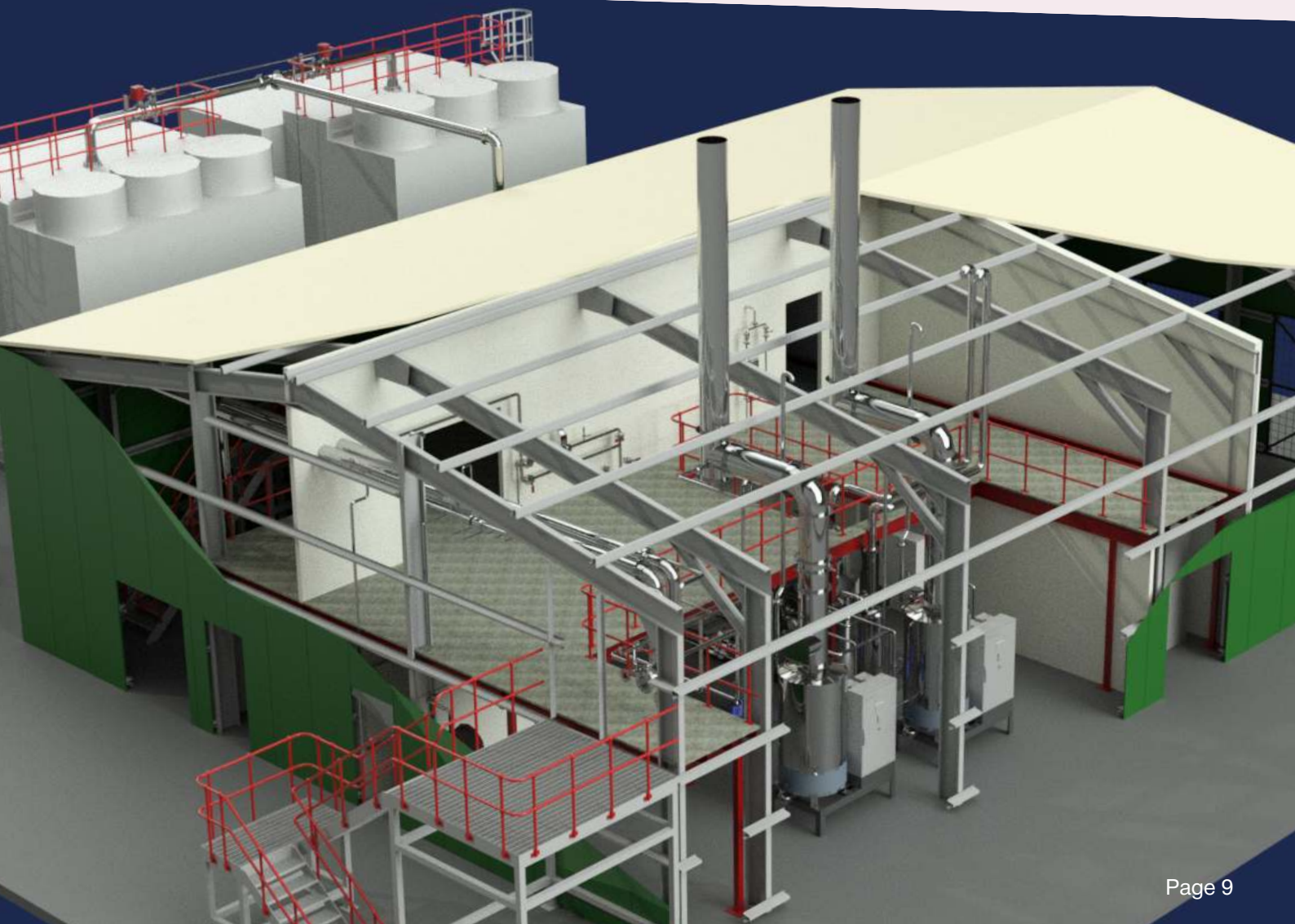
Unlocking Hidden  
Energy Savings in  
Waste Treatment



Engineering High-  
Performance  
Compressed Air  
Solutions



Unlocking Efficiency  
in a Mature Water  
Abstraction System



# Engineering Design

## Get the Asset You Planned - Not the One You End Up With

In complex manufacturing environments, up to 85% of cost and carbon performance is locked in during early design.

Yet these decisions are often made on incomplete data, fragmented inputs and unclear ownership - setting projects up for avoidable risk.

The consequences are predictable: change orders, delays, cost overruns and assets that underperform for years.

### How This Shows Up on Site

You rarely see the problem at the design stage.

You see it when construction starts, or when production is at risk.

- **Rework and redesign:** Constraints emerge late, triggering change orders, delays and escalating costs
- **Compliance and exposure:** GxP and regulatory issues surface late, with decisions buried in emails rather than structured design
- **Underperforming assets:** Capacity, energy and reliability targets missed earlier than planned
- **Fragmented accountability:** Multiple parties shape the outcome, but no single engineering authority owns it

These are not commissioning issues - they're design decisions made months or years earlier.



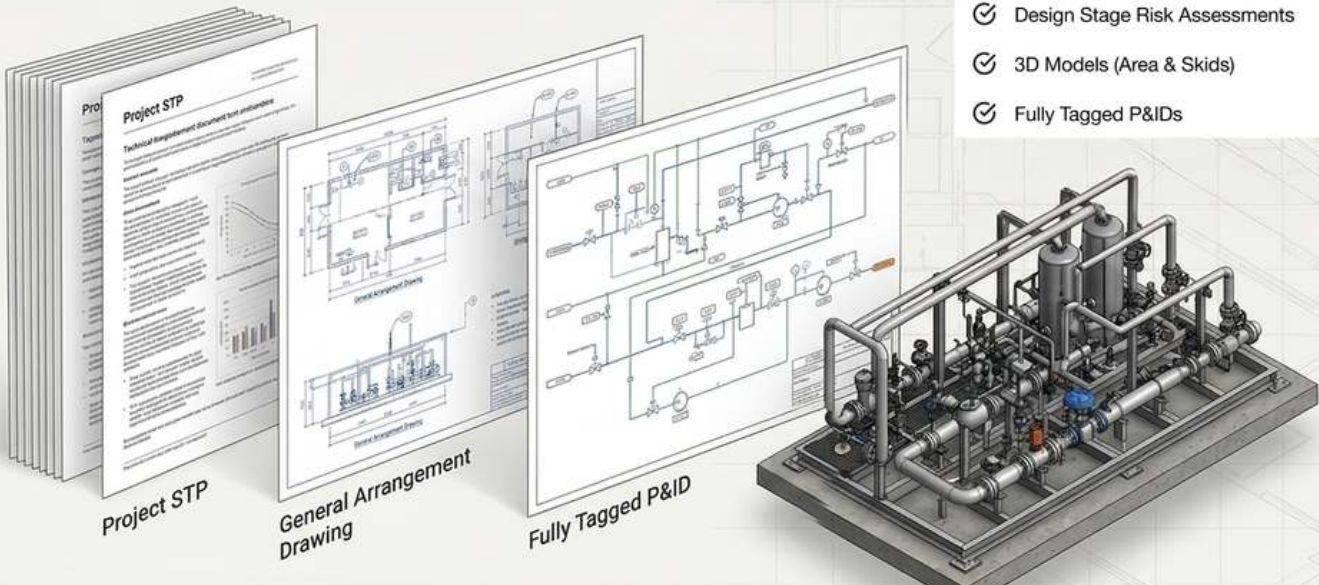
# Projective's Approach

## Engineering Ownership from Day One

We treat early design as the decisive engineering intervention it is.

From concept through to commissioning, we provide continuous engineering ownership - ensuring decisions are made with the right data, captured properly, and carried through without dilution. The result: the asset you commission is the asset you planned - predictable in cost, compliant by design, and primed to deliver the performance your business case depends on.

### Documentation that Drives Absolute Confidence



**Project STP**  
**General Arrangement Drawing**  
**Fully Tagged P&ID**

#### What you actually get

- ✓ Quality / GXP Impact Assessments
- ✓ Full (Cool URS & Automation Specific)
- ✓ Design Stage Risk Assessments
- ✓ 3D Models (Area & Skids)
- ✓ Fully Tagged P&IDs

## Our Service Tiers - One Continuous Engineering Path



**Feasibility: Validate the Right Solution Before You Commit Capital**

Before you commit capital, we challenge assumptions, assess options, and deliver viability reports with clear risk and cost visibility.



**Concept (Basic) Design**

We define the basis of design with PFDs, initial sizing, and compliance considerations, grounded in real site conditions.



## Detailed Design

Complete design-to-tender or design-to-build packages, including P&IDs, 3D models, automation and electrical systems.



## Implementation & Delivery

Oversight of construction, commissioning and verification — ensuring what was designed is delivered.



## Commissioning & Knowledge Transfer

We stay through commissioning and beyond, embedding knowledge into your team and ensuring performance holds under real conditions.

## What This Means for Your Site

Staying with Projective from optioneering through to delivery ensures the solution conceived is the solution delivered, with no loss of technical integrity between stages.



## Product Suite



### Design & Engineering

End-to-end design from feasibility through to detailed engineering, including process design, PFDs/P&IDs, equipment sizing, and full multidisciplinary systems.



### Project Delivery & Construction

Full lifecycle management - from planning and tendering through to construction and handover - as client engineer or principal contractor.



### Asset & Performance Optimisation

Improving performance, reducing costs and strengthening reliability through due diligence, maintenance strategy and facility planning.



### Third Party Funding

With competing demands on capital between business growth and business investment, Projective can provide the solution through the provision of funding long-term utilities and facilities projects.

# Lock in the asset you actually planned for.

Engage Projective early to de-risk design and guarantee performance.

**We own the outcome. That's the Projective difference.**

## Trust the Outcome

Scan the QR code for full technical case studies and engineering specification direct to your device.



Brewery Boiler Upgrade Delivers £256K Annual Savings



Modernising Steam Systems for Performance and Long-Term Value



Delivering Utility Solutions from Concept Through to Completion



Delivering the Engineering Vision



# With You For The Journey

## Engineering certainty, from decision to long-term performance

Projective's lifecycle approach (Consult – Engineer – Design – Support) goes beyond short-term fixes. We take responsibility for the full lifecycle of your utilities, from early decision-making through to long-term performance, optimisation and sustainability outcomes.

Working in partnership with your team, our experienced engineers and subject matter experts help you understand what's really happening across your utilities, where risk or inefficiency is hiding, and what action will deliver the greatest return.

This might mean reducing energy consumption, avoiding unnecessary capital spend, improving reliability, or strengthening compliance - often all at once.

Clients value not only the outcomes we deliver, but the clarity and confidence we bring to complex decisions.

We turn complex utilities and facilities challenges into clear, defensible choices and stay accountable through implementation and long-term asset performance.

## What this means for you



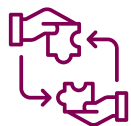
### Evidence-based decisions

A clear view of options, trade-offs, and risks before capital is committed - grounded in data, not assumption.



### Solutions you can trust

Engineering advice built on rigorous analysis and transparent evaluation. Every recommendation is safe, compliant, and financially sound.



### Delivery without disruption

Carefully managed implementation that protects live operations and validates results against agreed targets.



### Accountability over time

Ongoing involvement to monitor performance, optimise efficiency and support sustainability objectives throughout the full life of the asset - not just at handover.

Our signature process ensures that utilities remain understandable, manageable, and future-ready giving you confidence from the first conversation through to long-term operation.

# Globally Trusted Partners

Projective is known for solving complex challenges with care, innovation, precision and speed. Discover how we support our clients with innovative utilities and facilities engineering solutions across multiple sectors.



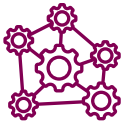
## Depth of Experience

We've supported our clients for over 25 years through industry trends and global shifts, so you can be confident in our knowledge.



## Bespoke Solutions

Always tailored, always responsive.



## Agile and Dynamic

Embrace change, learn continuously and adapt to evolving client needs.



## Loyal Partnerships

Here to support your team for as long as it takes.



## Friendly Experts

Speaking your language with clear communications, warmth, confidence and professionalism.



## Global Reach

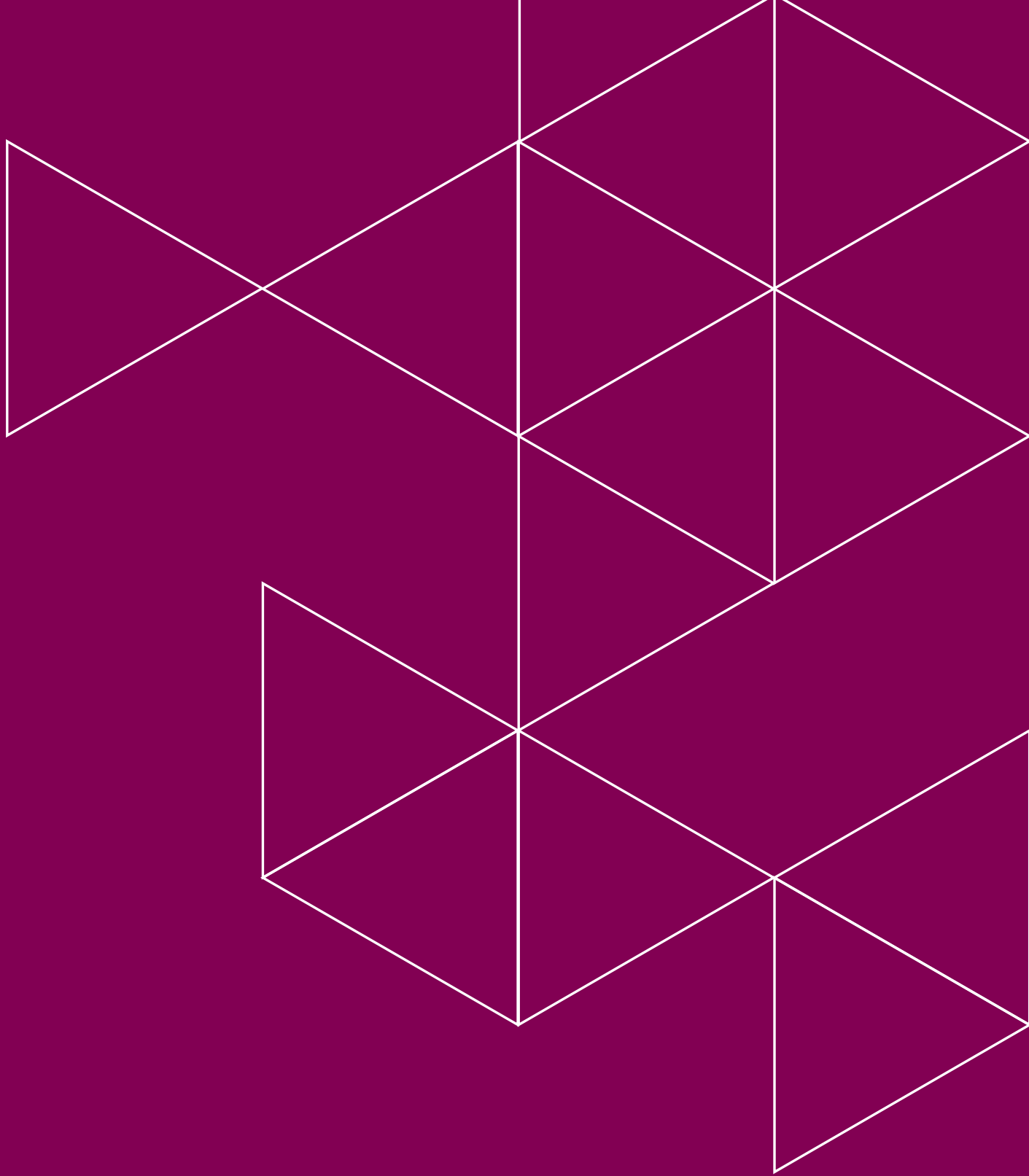
On site in your exact locations.

Clients value our clear communication, collaborative approach and ability to deliver high-quality, solutions that meet goals across cost, quality and compliance.

“Against a challenging target, the Projective team achieved an exceptional energy savings - nearly 3 times the goal, setting a new benchmark across our network.”

Senior Engineering Lead, Major European Pharmaceutical Site





# projective

Consult ▶ Engineer ▶ Deliver ▶ Support

## Get in touch

---

-  Web: [projectiveengineering.com](https://projectiveengineering.com)
-  Email: [enquiries@projectiveengineering.com](mailto:enquiries@projectiveengineering.com)
-  HQ UK Office: +44 (0)1252 360 400